



**IBIX**®  
SPECIAL CLEANING

Air-blasters, Compressors,  
Accessories for Selective  
Micro-Air-Abrasion, cleaning and  
treatment of surfaces

**Special Cleaning System**





# Catalogue

---

Air-blasters, Compressors, Accessories  
for Selective Micro-Air-Abrasion, cleaning  
and treatment of surfaces

## **IBIX SPECIAL CLEANING**

**IBIX is Leader in selective, low-pressure  
cleaning technology.**

IBIX develops and manufactures equipment to clean and preserve surface. IBIX offers services and consultancy to solve surface cleaning, preparation and maintenance problems, promoting the use of low-pressure selective cleaning systems that are innovative, high-performance and versatile. IBIX was Founded in 2000, and it has been associated with Assorestauro since then. Italian Association for Artistic and Urban Restoration and is actively involved in promoting the Italian approach to the Conservation of Cultural Heritage.



## Suitable for every need

Attention aimed not only at the product, but also at the solution of a problem, constant dedication to innovation and search for new compatible and sustainable methods have allowed IBIX and its network of partners to evolve, offering our customers the tools to increase their competitiveness on the markets.

## Constant research and development





**FROM  
RESTORATION**



**TO  
INDUSTRY**

### **Cultural Heritage Assets Restoration and Conservation: Low Pressure Selective Cleaning of Historical Surfaces**

**IBIX** supplies Technological Soft Cleaning Solutions for Restoration Works that are in compliance with the Italian Cultural Heritage Standard governing cleaning of historical surfaces (UNI Beni Culturali 11182/2006).

The air-mechanical cleaning system developed by **IBIX** permits to gently remove deposits and residues of atmospheric pollution from stone artefacts of historic-artistic value whilst safeguarding high-quality patinas and historic coatings to be conserved (plaster, oxalate, paint or protective layers) without any risk of uncontrolled surface abrasion. Thanks to the versatility of the **IBIX** system, to calibrate the cleaning operation, the following parameters can be selected appropriately.

### **Advantages**

- Lightweight, handy and easy-to-use
- Extruded aluminium construction: lightness, ease of transport and handling even in hard to reach areas. (e.g., scaffolding hatches, roadside, transport, small vans, etc.)
- Low air consumption: minimum air requirement 300 litres for Nano, 500 litres for IBIX 9, 700 litres for HELIX, and 1600 litres for IBIX 25/28
- Working Pressure: adjustable from 0.2 to 7.5 bar.

Main Technical Characteristics of the **IBIX** System:

**IBIX** Portable Aero-Mechanical Cleaning Devices are easy to handle, light, and simple to use. They always deliver a constant flow of air and abrasive, consuming small volumes of compressed air and require a single operator.

**IBIX** equipment is a valid tool for industrial maintenance. **IBIX** wet and dry systems allow sandblasting on large areas as well as spot blasting and easily switch to wetblasting with mineral abrasives or soda blasting in places where the DRY technology cannot be used.

### **Applications**

- Surface preparation before painting in compliance with international standards abrasive sandblasting.
- Maintenance of steel structures in the mining sector.
- Restoration and Cleaning in the industrial maintenance sector.
- Removal of oil, paint residues, glue, and ink from machines and tools.
- NDT checks for weld inspection.
- Cleaning of rubber gaskets.
- Removal of carbon deposits without altering the surface, etc.

# MAIN SYSTEMS OFFERED \*

\*Hereafter, systems refer to TRILOGY equipment

## NANO SYSTEM



**IBIX NANO 3** air-blasting unit available in the following versions: **NANO DRY, H2O, HELIX, TRILOGY,** with restoration **PEN.**

- Pressure: 0.2 to 7.5 bar\*
- Micrometric dosing of the blasting material
- Particles size 38 - 600 µm
- Air supply: 300 l/min
- Standard nozzle size: Int. Ø 3 mm, cylindrical with dry and **H2O** guns; dry and **H2O**; Int. Ø 3 mm, Venturi with **HELIX** gun
- Selective nozzle: 4-5-dry; Venturi nozzle: 3-4-5-6-dry
- Other types of nozzles available: Int. Ø 1.5-2-2.5-3 L.115-3.5-4-4.5 mm cylindrical, and 2.5-2.5 L.115-4 L.115 mm Venturi with dry and **H2O** guns; Int. Ø 2-3 mm selective, 2-3-4-5-6-8 Venturi with **HELIX** gun
- Blasting hose: 3 m
- Abrasive material tank capacity: 2.5 l.
- Max. height: 500 mm
- Max. width: 220 mm
- Max. length: 270 mm
- Weight (with tank empty): approx. 10 kg

\*Depending on the compressor

## IB2 TROLLEY screw type electro-compressor



Air compressor with screw - type compression unit - wheeled for maximum versatility and compactness

Electric motor: 2.2 kW/230 V  
Air flow rate: 300 l/min  
Max. pressure: 10 bar  
Noise level: 69 dB(A)  
Weight: 55 kg  
Dimensions: 700x650x700 mm

## IB2 TROLLEY PETROL screw type moto-compressor



Air compressor with screw - type compression unit - wheeled for maximum versatility and compactness

Engine: Briggs&Stratton -4.8 Hp  
Air flow rate: 400 l / min  
Max. pressure: 10 bar  
Noise level: 75 dB(A)  
Weight: 65 kg  
Dimensions: 700x650x700 mm

## IBIX DRY 3

These dryers achieve excellent performance even in instances of high ambient and high inlet temperatures ensuring a reduced compressed air pressure drop.

Paired compressor	4 hp
l/min	350
width mm	310
length mm	345
height mm	345
weight Kg.	21



## IBIX 9 NOZZLE BOX

Containing the following nozzles:  
Int. Ø 2 -4 mm, cylindrical  
2.5 - 4 mm Venturi



## MAIN SYSTEMS OFFERED \*

### IBIX 9 SYSTEM



**IBIX 9** air-blasting unit available in the following versions: **DRY, H2O, HELIX, TRILOGY.**

Pressure: 0.2 - 7.5 bar  
 Micrometric dosing of the blasting material.  
 Particles size 38 - 800 µm  
 Air supply: 500 l/min.  
 Standard nozzle size: Int. Ø 3 mm, cylindrical with dry and **H2O** guns; int. Ø 3 mm Venturi with **HELIX** gun.

Other types of nozzles available: Int. Ø 1.5-2-2.5-3 L.115-3.5-4-4.5 mm cylindrical, and 2.5-2.5 L.115 -4-4 L.115 mm Venturi with dry and **H2O** guns, Int. Ø 2-3-4 mm selective, and 2-4-5-6-8 Venturi with **Helix** gun  
 Blasting hose: 3+3 m  
 Abrasive material tank capacity: 9 l  
 Max. height: 890 mm  
 Max. width: 310 mm  
 Max. length: 350 mm  
 Weight (with tank empty): approx. 18 kg

### IB 900 Moto-compressor



Wheeled motor-driven compressor  
 Engine power: 8 kW  
 Air flow rate: 900 l/min  
 Max. pressure: 10 bar  
 Noise level: 97 dB(A)  
 Weight: 167 kg  
 Dimensions: 1150x751x1070 mm

Also available with manual startup

### E90 Electro-compressor



Wheeled electro-compressor  
 Engine power: 5.5 kW  
 Power supply (Volt/Hz): 400/50  
 Air flow rate: 630 l/min  
 Max. pressure: 10 bar  
 Noise level: 77 dB(A)  
 Weight: 135 kg  
 Dimensions: 750x585x790 mm

### IBIX DRY 9

These dryers achieve excellent performance even in instances of high ambient and high inlet temperatures ensuring a reduced compressed air pressure drop.

**Paired compressor**  
**l/min**  
**width mm**  
**length mm**  
**height mm**  
**weight Kg.**

7,5 hp  
 950  
 370  
 515  
 345  
 26



### IBIX 9 NOZZLE BOX

Containing the following nozzles:  
 Int. Ø 2 -4 mm, cylindrical  
 2.5 - 4 mm Venturi



## MAIN SYSTEMS OFFERED

### IBIX 25/28 SYSTEM



**IBIX 25/28** air-blasting unit available in the following versions: **DRY, H2O, HELIX, TRILOGY.**

- Pressure: 0.2 - 7.5 bar.
- Micrometric dosing of the blasting material.
- Particles size 38 - 1400 µm.
- Air supply: 1500 l/min
- Standard nozzle size: Int. Ø 5.5 mm, cylindrical.
- Int. Ø 6 mm Venturi with **HELIX** gun
- Other types of nozzles available: Int. Ø 1.5-2-2.5-3-3 L.115-3.5-4-4.5-5-5.5-5.5 L.115-7 mm cylindrical, and 2.5-2.5 L.115-4-4 L.115-5-6-6 L.115 mm Venturi with dry and **H2O** gun; Int. Ø 2-3-4 mm selective, and 2-3-4-5-8 Venturi with **HELIX** gun
- Blasting hose 5+10 m
- Abrasive material tank capacity: 28 l
- Max. height: 1080 mm
- Max. width: 320 mm
- Max. length: 426 mm
- Weight (with tank empty): approx. 40 kg

### IB2000 Electro-compressor



Air compressor with screw-type compression unit, with integrated dryer  
 Engine power: 18.5 kW  
 Power supply (Volt/Hz): 400/50  
 Air flow rate: 2090 l/min  
 Max. pressure: 8 bar  
 Noise level: 69 dB(A)  
 Weight: 349 kg  
 Dimensions: 1560x730x1400 mm

### IB2000 Motor-driven Compressor



Wheeled compressor – screw  
 Engine: HONDA 22 Hp/petrol  
**Built-in cooling system**  
 with automatic water discharger  
 Air flow rate: 1900 l/min  
 (1600 l/min EU)  
 Max. pressure: 8 bar  
 Noise level: 97 dB(A)  
 Weight: 220 kg  
 Dimensions: 1200x780x950 mm

### IBIX DRY 18

Dryers must be fed with oil-free and dry air especially when they are used with fine abrasives or sodium bicarbonate.



<b>Paired compressor</b>	11 hp
<b>l/min</b>	1800
<b>width mm</b>	370
<b>length mm</b>	515
<b>height mm</b>	375
<b>weight Kg.</b>	32

### IBIX 25 NOZZLE BOXES

Containing the following nozzles:  
 Int. Ø 4,5 7 mm, cylindrical and 4 - 6 mm Venturi



## MAIN SYSTEMS OFFERED



### IBIX 40 SYSTEM



**IBIX 40** air-blasting unit available in the following versions:  
**DRY, H2O, HELIX, TRILOGY**

- Pressure: 0.2 - 7.5 bar
- Micrometric dosing of the blasting material 38 - 1400µm
- Compressed air supply: 5000 l/min
- Standard nozzle size: int. Ø 8 mm cylindrical and int. Ø 8 mm Venturi with **HELIX** gun.
- Other types of nozzles available: Int. Ø 7-10-12 mm, cylindrical. 5-5.5-5.5 L.115-7 L.120-8 L.120 -9 L.120 Venturi. Other types of nozzles available with **HELIX** gun: int. Ø 6 mm, Venturi, - 2-3-4 selective. Blasting medium hose with protective sheath: 5+10 m
- Blasting medium tank capacity: 40 l
- Weight (with tank empty): approx. 48 kg

### IB 5300 REFRIGERATION COMPRESSOR

Suitable for supplying the IBIX 40/60



Engine: Kohler eco5  
V2403 – M-DI 36.5 kW/Diesel  
Air flow rate: 5000 l/min  
Max. pressure: 7 bar  
Noise level: < 98 LWA  
Weight: 850 kg  
Dimensions (with axle):  
3191x1340x1320 mm

Electric compressors of various capacities are also available upon request.

Refrigeration compressor

### IBIX DRY 52

Dryers must be fed with oil-free and dry air especially when they are used with fine abrasives or sodium bicarbonate.

Paired compressor	15 hp
l/min	5200
width mm	345
length mm	445
height mm	740
weight Kg.	41



### IBIX 40 NOZZLE BOXES

Containing the following nozzles:  
Int. Ø 7-8-12 mm, cylindrical.



## MAIN SYSTEMS OFFERED



### IBIX 60 SYSTEM



**IBIX 60** air-blasting unit available in the following versions:  
**DRY, H2O, HELIX, TRILOGY.**

- Pressure: 0.2 - 7.5 bar (depending on the compressor)
- Micrometric dosing of the blasting material 38 - 1800µm
- Compressed air supply: 6000 l/min
- Standard nozzle size: int. Ø 8 mm cylindrical and int. Ø 8 mm Venturi with **HELIX** gun.
- Other types of nozzles available: int. Ø 5-5.5 L.115-7-10 mm cylindrical. 5-6-6 L.115-7 L.120-8 L.120-9 L.120 Venturi. with gun – with **HELIX** gun: Ø 6 mm Venturi. Ø 2-3-4 mm selective
- Blasting medium hose with protective sheath: 5+10 m
- Blasting medium tank capacity: 60 l
- Weight (with tank empty): approx. 70 kg

### IB8000 Motor-driven Compressor

#### Dehumidifier with refrigeration system



Engine: Kohler eco5  
V3307 – DI-T-E3B  
55.4 kW/Diesel  
Air flow rate: 8000 l/min  
Max. pressure: 7 bar  
Noise level: < 98 LWA  
Weight: 1375 kg  
Dimensions (with axle):  
3491x1590x1640 mm

**Electric compressors of various capacities are also available upon Customer request**

### IBIX DRY 75

Dryers must be fed with oil-free and dry air especially when they are used with fine abrasives or sodium bicarbonate.

<b>Paired compressor</b>	37 hp
<b>l/min</b>	7500
<b>width mm</b>	555
<b>length mm</b>	580
<b>height mm</b>	885
<b>weight Kg.</b>	56



### IBIX 40-60 NOZZLE BOXES

Containing the following nozzles:  
Int. Ø 7-8-12 mm, cylindrical.



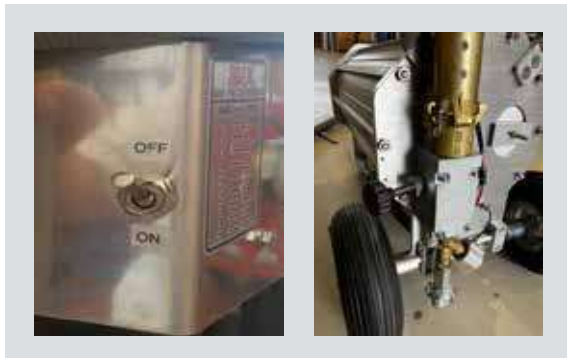
## SPECIAL EQUIPMENT

### IBIX 60 HIPRO H2O

**IBIX 60 HI-PRO H2O** offers two different operating modes: dry or with water nebulisation. The water and media are mixed at the nozzle to minimize water consumption, while vaporization decreases the dustiness and thus the on-site costs. The use of water prevents dust dispersion, making the machine particularly suitable for use in urban environments.

#### TECHNICAL SPECIFICATIONS

- Pressure: adjustable from 0.2 to 8 bar (depending on the compressor)
- Abrasive media size: from 38 µm to 1800 µm and with different specific gravity (Natural Mineral Almandine, Sodium Bicarbonate, Calcium Carbonate, Magnesium Carbonate, glass beads and vegetal media)
- Compressed air supply: 8000 l/min
- Standard nozzle size: int. Ø 12 mm, cylindrical
- Other types of nozzles available: int. Ø 7-8-10-15 cylindrical and 7-8-9 L.120 Venturi
- Blasting medium/air hose with protective sheath: 10 m
- Tank capacity: 60 l
- Height: 1300 mm
- Width: 500 mm
- Length 570 mm
- Weight when empty: approx. 70 kg.
- ON-OFF switch, operates the additional air supply.
- Additional air supply connected to the **HI-PRO SYSTEM** abrasive valve.



**IBIX 60 HI-PRO** was designed for professionals who need greater abrasive power than traditional sandblasters.

With **IBIX 60 HI-PRO** there is greater air and media flow coming out of the gun (12 mm nozzle).

## SPECIAL EQUIPMENT

### HELIX HELICAL VORTEX SYSTEM

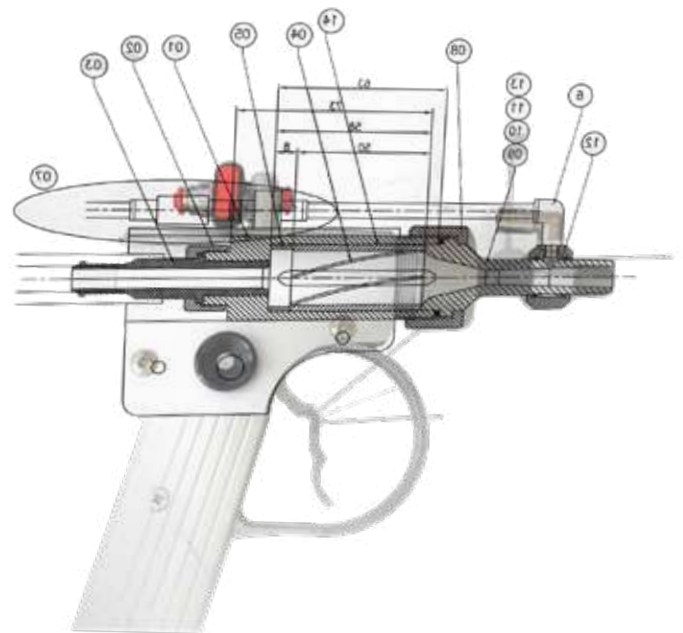
#### HELIX: THE BEST TECHNOLOGICAL SOLUTION FOR CONSERVATIVE CLEANING

A combination of the Venturi effect generated by a special conformation of the outlet cone and a helical rotary movement system considerably reduce the air volume and increase the cleaning target area.

**30% FASTER - 30% MORE EFFICIENT**

The use of special wear-resistant materials, tungsten carbide based, makes it possible to have nozzles that stand out due to their durability and life even when strong abrasives are used.

### IBIX SRL EXCLUSIVE PATENT



The **HELIX** helical vortex guns is an exclusive **IBIX patent**. **HELIX** is the only technology capable of giving the media exiting the gun a rotary motion, making **HELIX** the perfect technology for recovery and preservation.

Especially designed for cleaning delicate natural and artificial stones, marble and wood. **HELIX** provides for low pressure projection with "tangential impact" on the surface for a variety of media such as: Calcium Carbonates, Sodium Bicarbonate, Walnut shells and Corn Cobs, Almandine Garnet, including fine and superfine micronised products. Cleaning historic and modern surfaces is one of the most delicate steps in the entire preservation operation. The **HELIX** method provides an important contribution to the cleaning cycle because it reduces chemical and mechanical surface stress to a minimum thanks to the possibility of achieving optimum calibration of the cleaning process by adjusting both the operating pressure and the granulometry and hardness of the aggregates. These are selected according to the different intervention contexts and their overall biocompatibility and impact on health, for the protection of the environment and operators.

**TECHNICAL SPECIFICATIONS**

**HELIX 9**

Pressure: adjustable from 0.2 to 7.5 bar (depending on the compressor)  
 Micrometric dosing of the blasting material  
 Particles can range in size from 38 µm up to 800 µm and have different specific gravity (from Natural Mineral Almandine to Sodium Bicarbonate, Calcium Carbonate, Magnesium Carbonate, glass beads and vegetal media)  
 Recommended compressed air supply: 500 l/min  
 Standard nozzle size: Int. Ø 3 mm, Venturi.

Other types of nozzles available: Int. Ø 2-3-4 mm selective, and 2-4-5-6-8 Venturi  
 Blasting medium - air hose with protective sheath 6 m  
 Abrasive material tank capacity: 9 l  
 Max. height: 870 mm  
 Max. width: 310 mm  
 Max. length: 350 mm  
 Weight (with tank empty): approx. 18 kg



**HELIX 25**



Pressure: adjustable from 0.2 to 7.5 bar (depending on the compressor)  
 Micrometric dosing of the blasting material  
 Particles can range in size from 38 µm up to 1400 µm and have different specific gravity (from Natural Mineral Almandine to Sodium Bicarbonate, Calcium Carbonate, Magnesium Carbonate, glass beads and vegetal media)  
 Recommended compressed air supply: 1500 l/min

Standard nozzle size: Int. Ø 6 mm, Venturi.  
 Other types of nozzles available: Int. Ø 2-3-4 mm selective, and 2-3-4-5-8 Venturi  
 Blasting medium - air hose with protective sheath 10 m  
 Abrasive material tank capacity: 25 l  
 Max. height: 990 mm  
 Max. width: 320 mm  
 Max. length: 426 mm  
 Weight (with tank empty): approx. 38 kg

**HELIX 40**

Pressure: adjustable from 0.2 to 7.5 bar (depending on the compressor)  
 Micrometric dosing of the blasting material  
 Particles can range in size from 38 µm up to 1400 µm and have different specific gravity (from Natural Mineral Almandine to Sodium Bicarbonate, Calcium Carbonate, Magnesium Carbonate, glass beads and vegetal media)  
 Recommended compressed air supply: 5000 l/min

Standard nozzle size: Int. Ø 8 mm, Venturi.  
 Other types of nozzles available: Int. Ø 2-3-4 mm selective, and 2-3-4-5-6 mm Venturi  
 Blasting medium - air hose with protective sheath 10 m  
 Abrasive material tank capacity: 40 l  
 Max. height: 1100 mm  
 Max. width: 355 mm  
 Max. length: 520 mm  
 Weight (with tank empty): approx. 48 kg



**HELIX 60**



Pressure: adjustable from 0.2 to 7.5 bar (depending on the compressor)  
 Micrometric dosing of the blasting material from 38 µm to 1800 µm and with different specific gravity  
 Particles can range in size from 38 µm up to 1400 µm and have different specific gravity (from Natural Mineral Almandine to Sodium Bicarbonate, Calcium Carbonate, Magnesium Carbonate, glass beads and vegetal media)  
 Recommended compressed air supply: 6000 l/min

Standard nozzle size: int. Ø 8 mm Venturi  
 Other types of nozzles available: int. Ø 2-3-4 mm selective, and 2-3-4-5-6 Venturi  
 Blasting medium hose with protective sheath: 10 m  
 Max. height: 1300 mm  
 Max. width: 500 mm  
 Max. length: 570 mm  
 Weight (with tank empty): approx. 70 kg

## SPECIAL EQUIPMENT

### TRIPLE FUNCTION TRILOGY SYSTEM

The **TRILOGY** technology brings together the best innovation in single **IBIX** machine. With its extraordinary equipment, **TRILOGY**, it is possible to increase cleaning and treatment speed, further improving the performed offered by **IBIX** machines.

**TRILOGY** combines **DRY**, **H2O**, and the **HELIX** helical vortex in a single machine to offer the solution for every treatment need. **TRILOGY** offers operators maximum versatility and therefore the possibility of increasing the range of services they offer and the amount of work performed. All this, of course, without giving up the usual strengths of **IBIX** technology. Practicality, lightness, speed, safety, and ecology remain the key features of these innovative machines.

#### STRENGTHS OF THE TRILOGY SYSTEM

Quick Connect system

Inert adjustment from above

Quick unloading

IBIX Easy-Test Nano Technology



Double gun, triple function



Dual mode water supply

- **Triple aero-abrasive technology** capable of performing any cleaning operation: **DRY**, **H2O**, **HELIX**.
- **IBIX Easy-Test Nano Technology**, it allows to empty the machine thoroughly, avoiding any contaminations among the media fluxes, it also helps to find the ideal abrasive material for every type of performance;
- **Quick Connect System**, it enables a lengthening of the blasting medium hose and a quick change of the guns;
- **Quick release valve**, it improves the abrasive material consumption and offers better performances;
- **Dual mode water supply**, it enables to use water as a dust damper as well as an abrasive solution to be combined with other elements in order to achieve perfect cleaning results.
- **Adjustment from above**: better comfort when using, ergonomic hand-grip, easier to regulate with precision. Manometer to accurately measure the amount of aggregate material to use.



## TRILOGY 9

### TECHNICAL SPECIFICATIONS

Pressure: adjustable from 0.2 to 7.5 bar (depending on the compressor)

Micrometric dosing of the blasting material.

Particles can range in size from 38 µm up to 800 µm and have different specific gravity (from Natural Mineral Almandine to Sodium Bicarbonate, Calcium Carbonate, Magnesium Carbonate, glass beads and vegetal media)

Recommended compressed air supply: 500 l/min.

Standard nozzle size: Int. Ø 3 mm, cylindrical with dry and

**H2O** guns; int. Ø 3 mm Venturi with **HELIX** gun

Other types of nozzles available: Int. Ø 1.5-2-2.5-3 L.115-

3.5-4-4.5 mm cylindrical, and 2.5-2.5 L.115 -4-4 L.115 mm

Venturi with dry and **H2O** guns, Int. Ø 2-3-4 mm selective,

and 2-4-5-6-8 Venturi with **Helix** gun

Blasting medium - air hose with protective sheath 3+3 m

Abrasive material tank capacity: 9 l

Max. height: 890 mm

Max. width: 310 mm

Max. length: 350 mm

Weight (with tank empty): approx. 18 kg



## TRILOGY 28



Pressure: adjustable from 0.2 to 7.5 bar (depending on the compressor)

Micrometric dosing of the blasting material.

Particles can range in size from 38 µm up to 1400 µm and have different specific gravity (from Natural Mineral Almandine to Sodium Bicarbonate, Calcium Carbonate, Magnesium Carbonate, glass beads and vegetal media)

Recommended compressed air supply:

1500 l/min

Standard nozzle size: Int. Ø 5.5 mm, cylindrical with dry and **H2O** guns;

Int. Ø 6 mm Venturi with **HELIX** gun

Other types of nozzles available: Int. Ø 1.5-2-2.5-3-3

L.115-3.5-4-4.5-5-5.5-5.5 L.115-7 mm cylindrical, and

2.5-2.5 L.115-4-4 L.115-5-6-6 L.115 mm Venturi with

dry and **H2O** gun; Int. Ø 2-3-4 mm selective, and 2-3-

4-5-8 Venturi with **HELIX** gun

Blasting medium - air hose with protective sheath

5+10 m

Abrasive material tank capacity: 28 l

Max. height: 1080 mm

Max. width: 320 mm

Max. length: 426 mm

Weight (with tank empty): approx. 40 kg

## TRILOGY 40



Pressure: adjustable from 0.2 to 7.5 bar (depending on the compressor)

Micrometric dosing of the blasting material from 38µm to 1400 µm

Compressed air supply: 5000 l/min

Standard nozzle size: int. Ø 8 mm cylindrical and int. Ø 8 mm Venturi with **HELIX** gun.

Other types of nozzles available: Int. Ø 7-10-12 mm, cylindrical. 5-5.5-5.5 L.115-7 L.120-8 L.120-9 L.120 Venturi.

Other types of nozzles available with **HELIX** gun: int. Ø 6 mm, Venturi, - 2-3-4 selective.

Blasting medium hose with protective sheath: 5+10 m

Blasting medium tank capacity: 40 l

Weight (with tank empty): approx. 48 kg

## TRILOGY 60



Pressure: adjustable from 0.2 to 7.5 bar (depending on the compressor)

Micrometric dosing of the blasting material from 38µm to 1800µm

Compressed air supply: 6000 l/min

Standard nozzle size: int. Ø 8 mm cylindrical and int. Ø 8 mm Venturi with **HELIX** gun.

Other types of nozzles available: int. Ø 5-5.5 L.115-7-8-10 mm cylindrical. 5-6-6 L.115-7 L.120-8 L.120 -9 L.120 Venturi. with

gun - with **HELIX** gun: Ø 6 mm Venturi. Ø 2-3-4 mm selective

Blasting medium hose with protective sheath: 5+10 m

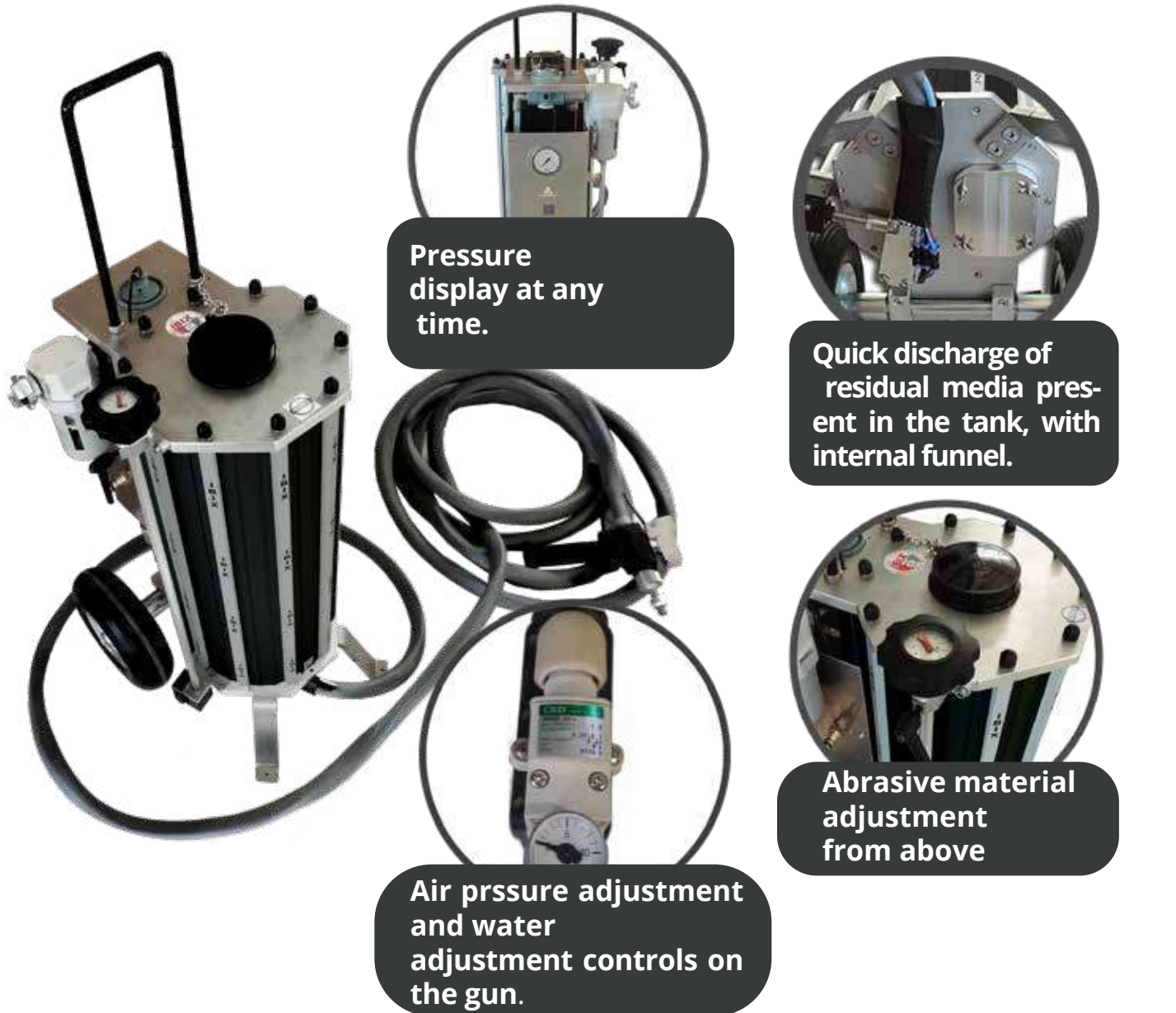
Blasting medium tank capacity: 60 l

Weight (with tank empty): approx. 70 kg

## SPECIAL EQUIPMENT

### PHOENIX

The best **IBIX** technology for comfort and effectiveness in the field of sandblasting, condensed in a single affordable system.



### TECHNICAL SPECIFICATIONS

- Structure: entirely in aluminium
- Operating pressure: 0.2 ÷ 7.5 bar
- Particle size: 38 µm to 1400 µm
- Length of remote control hose: 10 m
- Standard nozzle size: 5.5 mm
- Abrasive material tank capacity: 24.8 l
- Max. assembled machine height: 990 mm
- Max. assembled machine width: 316 mm
- Max. assembled machine length: 426 mm
- Package dimensions (box): 920 x 530 x 410 mm
- Machine weight (with tank empty): ~ 40 Kg
- Hand-grip vibrations: 1.157 m/s<sup>2</sup> (air) and 1.186 m/s<sup>2</sup> (water).



H2O gun



HELIX gun

## SPECIAL EQUIPMENT

### HELIOS 25 H20



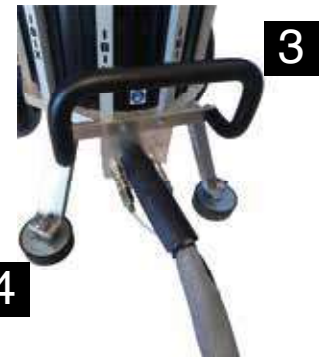
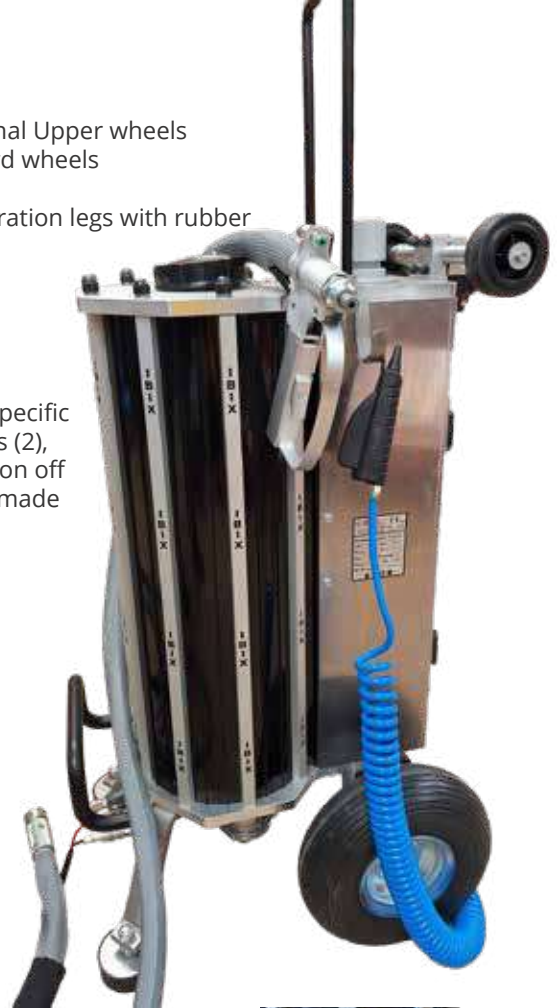
IBIX HELIOS can count on 4 hard wheels, 2 in front and 2 at the back (1), so that loading and transport are easier.

In Order to make it easier for the operator to move the machine on irregular terrain, IBIX increased ground clearance. Ground clearance in the HELIOS is 45 mm greater than in standard IBIX 25

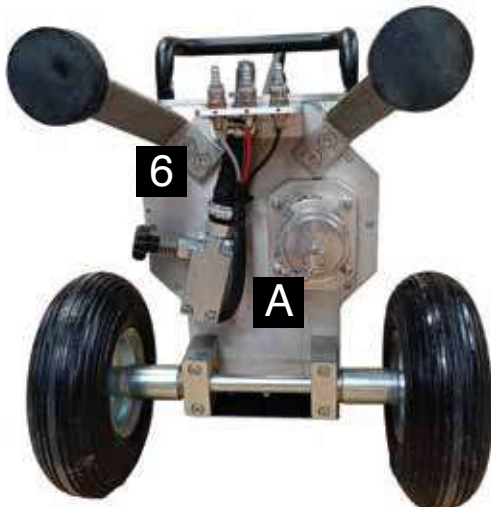


BLASTING GUN WITH NEW TRIGGER. The new blasting gun and trigger (5) make the sandblasting process more comfortable for the operator.

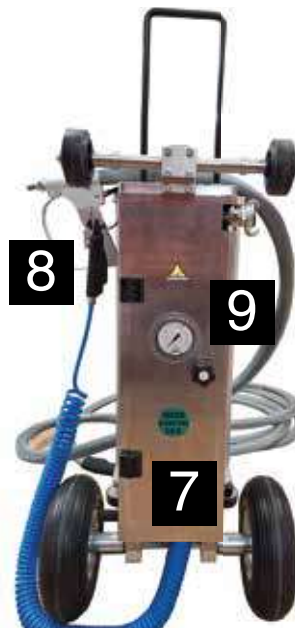
Thanks to specific hard wheels (2), movement on off terrain are made easier.



Thanks to the handle (3), the operator can lift and move the machine easily. The Legs with rubber details (4) increase the stability of the machine when it is on the ground.



The Rilsan hoses of the gun are connected thanks to "Quick Connect System" (6). This system makes the replacement of the hoses easier and prevents malfunction and accidents. All fittings are in the lower front part of the machine, and they are easily accessible anytime.



IBIX HELIOS is equipped with a metal case (7) for the protection of the regulators in the upper part of the machine. Inside this metal case, there a small air gun (8) to clean the machine fast and easy. There is a manometer (9) thanks to which air pressure is visible all the time. Pressure is visible even without pulling the gun trigger. This manometer shows the pressure as we set it with the regulator on the machine.



HELIOS is equipped with Internal funnel and a quick discharge system (A) to facilitate abrasive flow from the machine. By unscrewing part A, the abrasive will automatically flow out from the discharge system ( Part B). Once discharge is complete, it is recommended to clean the closing area. In order to open/close the discharge system, it is recommended to use the special key.

- Additional Upper wheels
- Standard wheels
- Handle
- Anti vibration legs with rubber details.

## SPECIAL EQUIPMENT

### TWIN 25 HYBRID DRY ICE SYSTEM

The IBIX Twin 25 Hybrid Dry Ice System is a step forward in surface treatment innovation.

#### THREE FUNCTIONS IN JUST ONE MACHINE



#### TECHNICAL SPECIFICATIONS

- Minimum air requirement 3,500 Litres/min
- Ideal air volume supply 5,000 Litres/min
- Dry ice consumption 40 kg/h aprox
- Noise level 86-120 dB (at 6 bar pressure)
- Hose length 10 Metres
- Power supply 230 V - AC 50 Hz
- Dimensions L: 656 mm W: 435; H: 1085 mm
- Total weight includes gun 71.25kg
- Twin hopper Volume 11 Litres + 11 Litres
- Air pressure Min: 2 bar Max: 9 bar

This multifunctional design provides three different modes of operation in one machine:

#### DRY ICE ONLY MIXED DRY ICE AND ABRASIVE ABRASIVE ONLY

Thanks to this flexibility, it is possible to tackle a wide range of applications, adapting to the specific requirements of surface cleaning or preparation operations.

The IBIX Twin Hybrid 25 Dry Ice System is the ideal choice for professionals looking for a versatile, high-performance solution that is capable of meeting any challenge in surface cleaning and media blasting.

#### Gentle Cleaning with Dry Ice

The dry ice only mode is ideal for operations that require precise and powerful cleaning with no residues. This technology takes advantage of dry ice sublimation.

Dry Ice changes states from a solid to a gas when hits the surface being cleaned, removing contaminants, coatings and residues without damaging delicate surfaces. It is particularly suitable for cleaning injection and rotomoulding moulds, conveyor belts and sensitive equipment in industrial production lines without downtimes.

#### Efficient Cleaning with Sodium Bicarbonate

For removing tougher contaminants or for faster cleaning, the Dry Ice + Sodium Bicarbonate mode offers higher performance with minimal abrasion. Ideal for removing cured pigments and residues from industrial moulds as well as dirt, limescale and contaminants in food or other high hygiene standard industries.

#### Optimal Performance with Mineral abrasive

The use of a natural, high-performance abrasive (e.g. Garnet) offers exceptional results in the removal of tough coatings, deep rust and for industrial finish preparation. The combination of Garnet with dry ice maximises its efficiency, offering a fast, powerful process with optimal cleaning, reducing the amount of secondary waste.

#### Advanced Functions

Selector on the Gun: Allows you to change modes while working, without interrupting the process.

Precise Mixture Control: Gives you precise control over the proportions of dry ice and abrasive, to customise every operation.

Minimal secondary waste: Both operating modes, with Sodium bicarbonate, Garnet or other media, ensure minimal blasting residue, facilitating clean-up and reducing overall cleaning times.

Unparalleled Transportability: As a compact, multifunction machine, the IBIX Twin 25 Hybrid Dry Ice System replaces multiple pieces of equipment, offering optimal performance in an easily transportable format, ideal for on-site interventions at different job sites.



## SPECIAL EQUIPMENT

### BL - 27

The new mini dry ice blasting unit

Typical Applications

- Repetitive cleaning of small parts and components
- Electrical panels and printed circuits
- Small moulds for plastic injection
- Car interior cleaning (seats, panels, engines)
- Cleaning of small electric motors
- Cleaning of tools and components in mechanical maintenance workshops
- Spot cleaning of transmissions and bearings
- Cleaning and maintenance of mobile equipment



### TECHNICAL SPECIFICATIONS

Power supply: 230 V - AC 50 Hz

Dimensions: L: 705 mm W: 620 mm H: 800 mm

Total weight + gun: 50 kg

Hopper volume: 27 litres

Air pressure: Min: 2 bar Max: 8 bar

Required air flow: 3500 l/min

Dry ice consumption: 40 Kg/h

Noise level: 86-120dB (6 bar pressure)

Hose length: 10 meters

CRYOGENIC GUN (Standard)



HYBRID GUN (optional\*)



\* The hybrid gun can be used when the IBIX BL - 27 is combined with an IBIX 9 or IBIX 25, creating a Hybrid System that can work simultaneously by mixing dry ice and abrasive. With the Hybrid Gun, a dedicated kit must be installed to make the BL-27 compatible with the blasting units.

# IBIX MOBILE LAB

**IBIX MOBILE LAB** is a comprehensive & versatile portable laboratory to analyse and diagnose historic building materials in an easy and clear manner. By using this equipment the basic techniques to typify natural and artificial stones as well as degradation phenomena are made available to all those working in cultural heritage preservation. The methods of analysis used comply with both Italian and European regulations by UNI-Beni *Culturali (Cultural Heritage) and EN-Conservation of Cultural Property respectively. The equipment features a multilingual user interface. IBIX MOBILE LAB* is a must to efficiently manage cultural heritage throughout the entire conservation process, from the fact-finding project to the conservation itself, paying special attention to programmed maintenance.

## TECHNICAL TOOLS



### Hygrometer

Non-destructive electromagnetic induction measurement that leverages the ability of water molecules to attenuate, then modify, magnetic fields. The electric field penetrates the material through the instrument's contact tabs, creating a measuring range of approximately 5 cm in depth. The instrument provides water content in percentage weight in relation to the dry mass (%) on the basis of typical curves for each material.

Instrument used: TESTO 616 moisture meter:

- Measurement range on wood: <50%
- Measurement range on construction materials: <20%
- Resolution: 0.1%
- Depth of measurement: up to 5 cm. (N.B.: the outer layers of the material have a greater impact on the result of the measurement than inner layers).



### Tests to analyse sulphate, nitrate, chloride content

Photometer for transmission measurements; light source: LEDs; wavelength: 525 nm; operating range: SULPHATES: 5-150 mg/L, NITRATES: 0.1-45 mg/L, CHLORIDE: 0-210 mg/L. weighing set; dehydration; samples processed by **IBIX MOBILE LAB**; Reference standard: UNI 16455:2014 - Beni culturali - Materiali lapidei naturali ed artificiali - Determinazione del contenuto di sali solubili (Conservation of cultural heritage - Extraction and determination of soluble salts in natural stone and related materials used in and from cultural heritage).



### Optical microscopy

Portable USB microscope; magnification: 10X min, 150X max; built-in LED light.



### Reflectance Spectrophotometry and Colourimetry

Reflectance spectrophotometer; spectral range: 410-740 nm; automatic calibration; colour space used: CIE L\*a\*b\*; Illuminant: D65; Observer: 10 °; Reference standard: EN 15886:2010 "Conservation of cultural property - Test methods - Colour measurement of surfaces".



### Total soluble salt testing

Conductivity meter and pH meter; operating range: pH from 0.00 to 14.00; EC from 0 to 3999 µS/cm; resolution: 0.01 pH; EC: 1 µS/cm; accuracy: ±0.05 pH; EC: ±2% FS; temperature: ±0.5 °C; automatic temperature compensation; weighing set; dehydration; samples processed by **IBIX MOBILE LAB**; Reference standard: UNI 16455:2014 - Beni culturali - Materiali lapidei naturali ed artificiali - Determinazione del contenuto di sali solubili (Cultural heritage - Natural and artificial stones - Determination of soluble salt content).



### Water absorption test with contact sponge

NORMAL UNI 11432:2011. Methodology for *in-situ* evaluation of the effectiveness of water-repellent treatments on monumental surfaces with contact sponge method.



### Measurement of water absorption under low pressure

Cell to measure water absorption under low pressure by **IBIX MOBILE LAB**; diameter of measurement area: 27-35-47 mm, measurement column volume: 0.2-1-2-5-10 ml, measurement on horizontal/vertical surfaces; Reference standard: NORMAL 44/93 'Assorbimento d'Acqua a bassa Pressione', (Water absorption under low pressure).



### Humidity content by gravimetric determination

Weighing set; dehydration; samples processed by **IBIX mobile LAB**; Reference standard: UNI 11085:2003 - Beni culturali - Materiali lapidei naturali ed artificiali - "Determinazione del contenuto d'acqua: Metodo ponderale" (Cultural heritage - Natural and artificial stones - Moisture content determination. Gravimetric method)."



### Ambient parameters measurement

Infrared pyrometer to measure surface temperature; measurement range -20, +270 °C, resolution 1 °C, accuracy ± 3 % of the measurement value -1 °C Point of measurement (distance/ dimension ratio): 8:1, emissivity: 0.95 Psychrometer; measuring range: 0-100 % RH; 30...+100 °C; Resolution: R.H. 0.01%, Temperature 0.01°C, Accuracy: ± 2.0 % R.H. at 25 °C; ± 0.5 °C at 25 °C; wet bulb temperature and dew point calculation.



### USB Memory

It includes a USB memory with all laboratory and worksite data sheets to support the software.



Belfast, Queen University



Florence, railway station  
Santa Maria Novella



Catania, Santa Chiara  
Monastery



Malta, Historical Walls



Sidney, Harbor Mill



Princeton, Stuart Hall  
Seminary



London, Highgate West Hill



Dublin, Cemetery Tower

## OPERATING CYCLE

### Degradation status

IBIX uses the most advanced non-destructive or micro-invasive analytical techniques for the characterization of materials and the evaluation of related degradation phenomena.



### Interpretation of collected data

IBIX cooperates with specialized centers for laboratory analysis on Cultural Heritage to guarantee the best interpretation of data, also partnering in a multidisciplinary way with professional figures involved, such as designers, Works Managers, companies, renovators, as well as art historians, and museum collectors or curators.



### Materials diagnostic analyses

IBIX provides consultancy and diagnostic services in the field of Cultural Heritage to companies and professionals operating in the field of conservation. Particular attention is dedicated to the execution of tests provided for in current Italian and European legislation, UNI-Cultural Heritage, of CEN-TC 346 and those on stone materials defined by the NORMAL recommendations.



### Know-how transfer

The goal of IBIX is to represent a quality specialist support for operators in the field. For this reason, it commits itself to transferring its know-how to customers through the sharing of the technical evaluation report and the subsequent selection of the best technical cycle.



## ACCESSORIES

### MASK - HELMET

#### Filter Spec Pro

JSP Filter Spec ensures the maximum compatibility between safety goggles and breathing mask preventing the fogging of glasses or some air leaks from the mask. The latest generation of helmet JSP with the new Filter Spec ensures absolute compatibility between the two components. The helmet provides maximum comfort, the protective rubber adheres to the nose in order to maintain perfectly in line the masks with the breathing valve and the internal space dry and clean.



#### Breathing mask

Mask with filter for protecting the face and airways from smoke, dust, and abrasive particles. Recommended for light blasting jobs Light, resistant, and easy to wear and use, it protects the operator down to the shoulders. It has a large safety visor consisting of a clear glass outer eyepiece and a polycarbonate inner eyepiece.



#### Power cap

Power Cap Active is a lightweight and innovative positive pressure respirator designed to protect the user from dust particles and contaminants in the air; comfortable, lightweight and ergonomic, it is the ideal solution for works in dusty environments such as blasting and cleaning, as well as joinery, carpentry, food industry etc. It is compliant with EN 12949 TH1P standards.



#### Power cap Infinity

It offers TH3 respiratory protection, with a nominal protection factor of 500. The visor with mechanical impact resistance of grade B and optical class 1 allows the user to use the PPE without eye strain. Protective films can be applied to the viewer to preserve its qualities. The Power cap Infinity is based on the protective helmet with ABS shell and 3D harness, which guarantees maximum comfort and adaptability.



#### Half-Helmet

The powered respirator with helmet is a compact (only 1.4 kg) and fully integrated positive pressure (NPF=500\*) respirator capable of providing complete protection of the head, face, eyes, ears and respiratory tract. The air is sucked in and purified through a brushless motor powered by a lithium ion battery.

Fans and battery are integrated: this peculiarity guarantees freedom of movement and practicality without waist-tied accessory. Ideal for those who want to work independently and/or in tight spaces. No fit test is needed.



#### Full-Face Helmet



- EN 397 certification against impact (industrial protective helmets)
- TH3 or maximum degree of protection compared to Powercap for example which is TH1
- Engine control unit and rear battery, less exposed to dust
- Unique high efficiency rectangular P3 filter of our property
- Filter and battery alarm technology
- Long life coreless motor
- The helmet can either have a slim shell or a full integral shell.

## IBIX Protective Helmet



Suggested for protection against dust in industrial environments. Helmet with control unit, 2 dust filters, rechargeable lithium battery, and accessories. Equipped with **P3** filters.

The **IBIX** protective helmet respirator is one of the quietest models and ensures complete protection in the presence of dust as well as an autonomy of more than 8 hours of work.

## APOLLO Helmet

**APOLLO** helmet has a strong durable frame that provides optimum work safety. It is also equipped with oxygen supply that ensures comfortable and safe use for the operator. The **APOLLO** technology improves the work process, ensuring ease of operation due to its special features:



- The replaceable inlet connector guarantees a longer life of the helmet in case of wear;
- The visor sheath is very wide in order to protect the top of the helmet from abrasive dust; The washable lining inside, on the neck, makes the helmet cleaning easy and fast;
- The fixing strip of the helmet, wrapping around the bottom edge of the cap, can be easily closed with a buckle locking the helmet for maximum user safety;
- The helmet can be adjusted through a comfortable knob.

## PRO facemask

Offers a reliable solution for those who want to protect airways, eyes, and face. The PRO facemask is suitable for most industrial applications. EN

The P3 filter (not included with the mask) can be used for class P3 R solid and liquid aerosols. Filter certified as per EN 143:2007.

Special ABE2K1P3 filter (not included with the mask) for dust, organic vapors, gases, acidic gases, inorganic vapours, sulfur dioxide, and ABE2K1P3 class ammonia. Filter certified as per EN 14387:2008.



## LANCES\*

They allow extending the spray gun and thus facilitate the treatment of ceilings and floors, **and the special uses of IBIX technologies.**

### DRY NOZZLE EXTENSION LANCE\*



lance without nozzle installed

### H2O NOZZLE EXTENSION LANCE\*



lance without nozzle installed

## ACCESSORIES

### HELIX NOZZLE EXTENSION LANCE



Helical vortex nozzle with lance version to reach otherwise hard-to-reach areas to be treated, with the ability to use the advantages and features of the **HELIX** system.

### ECOFINISH CURVED TIP FLOOR LANCE



**ECOFINISH** lance, ideal for preparing surface pre-coating, allows working on walls and floors with maximum comfort.

### INTERNAL TUBE BLASTING LANCE

The flexible body allows following any pipe curves to be treated while the adaptable shims retain the tip centered during blasting. A special diffuser nozzle allows blasting the inner pipe along the length of the lance.

\* Lances are customizable accessories Warning: Subject to specific request, the **DRY** and **H2O** lances include the equipment needed for the specific use, but without nozzles, because those included with the purchased machine will be used.



### NOZZLE BOXES

#### IBIX 9 NOZZLES BOX

Containing the following nozzles:  
Int. Ø 2 - 4 mm, cylindrical  
2.5 - 4 mm Venturi



#### IBIX 25 NOZZLE BOXES

Containing the following nozzles:  
Int. Ø 4.5 - 7 mm,  
cylindrical and 4 - 5 mm  
Venturi



#### IBIX 40-60 NOZZLE BOXES

Containing the following nozzles:  
Int. Ø 7-8-12 mm,  
cylindrical.



## FAN NOZZLE

	1 bar	2 bar	3 bar	4 bar	5 bar	6 bar	7 bar	8 bar	9 bar	10 bar
Ø 2 mm	37	74	111	147	185	222	259	295	332	369
Ø 2,5 mm	58	115	173	231	289	346	404	462	519	577
Ø 3 mm	80	170	250	330	420	500	580	660	780	830
Ø 4 mm	150	300	44	590	740	890	1030	1180	1330	1480
Ø 4,5 mm	187	341	561	748	935	1122	1309	1496	1683	1870
Ø 5 mm	230	460	690	920	1150	1380	1620	1850	2080	2310
Ø 5,5 mm	279	559	838	1117	1396	1676	1955	2234	2513	2793
Ø 6 mm	330	660	1000	1330	1660	1990	2330	2660	2990	3320
Ø 7 mm	450	900	1360	1810	2260	2710	3170	3620	4070	4520
Ø 8 mm	590	1180	1770	2360	2950	3550	4140	4730	5320	5910
Ø 9 mm	750	1500	2240	2990	3740	4490	5230	5980	6730	7480
Ø 10 mm	920	1850	2770	3690	4620	5540	6460	7390	8310	9230
Ø 12 mm	1330	2660	3990	5320	6650	7980	9310	10640	11960	13290



The special shape of the nozzle, with specifically designed angles, allows the jet to be opened up to cover the operating area without losing effectiveness, thus increasing the treatment speed. The Fan Nozzle must always be paired with a standard nozzle. For the IBIX 9 and 25, use a maximum nozzle size of 5.5, while for the IBIX 40 and 60, a maximum nozzle size of 10 is recommended.

## LONG NOZZLE



Long Nozzle 115 mm  
For models **IBIX 9** and **IBIX 25**:

Greater speed and acceleration of the ejection flow, improved "sandblasting" performance.

Also available with steel nozzle protectors.

## FUNNEL



Funnel with and without sieve



13 kg funnel to facilitate emptying of the media bag

## <NO DUST> SUCTION HOODS & BRUSHES\*

Connected to a suitable industrial extraction fan, such devices facilitate dust suction when performing indoor works.



## ACCESSORIES

### IBIX DRY, REFRIGERATION AIR DRYERS

These dryers achieve excellent performance even in instances of high ambient and high inlet temperatures ensuring a reduced compressed air pressure drop.

The compressed air quality is essential to ensure proper operation of the **IBIX** blasters.

Dryers must be fed with oil-free and dry air especially when they are used with fine abrasives or sodium bicarbonate.



	Paired compressor	l/min	width mm	length mm	height mm	weight Kg.
<b>IBIX DRY 3</b>	4hp	350	310	345	345	21
<b>IBIX DRY 6</b>	5,5hp	600	370	515	515	25
<b>IBIX DRY 9</b>	7,5hp	950	370	515	345	26
<b>IBIX DRY 12</b>	10hp	1200	370	515	515	28
<b>IBIX DRY 18</b>	15hp	1800	370 <td 515	345	32	
<b>IBIX DRY 25</b>	20hp	2500	345	445	740	34
<b>IBIX DRY 52</b>	30 hp	5200	345	445	740	41
<b>IBIX DRY 75</b>	50hp	7500	555	580	885	56

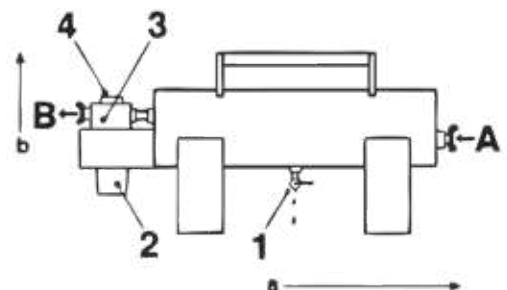
### DEHUMIDIFIER AC5

The air flow, already discharged of most part of the moisture, it is further dried through a sintered bronze filter. In output from the dehumidifier, the filtered air is free of moisture in order to allow the perfect operation of **IBIX** blaster.

### USE

The **dehumidifier AC5** must be connected to the compressed air hose connecting the compressor to the blaster. For best performance, it is recommended to install the unit as close as possible to the blaster and as far as possible from the compressor.

a	666
b	336
Weight	13 kg
Fitting Ø	1/2"
Drying capacity	700 l/min



# ACCESSORIES

*Range of extractors to reduce polluting dust and restore healthy air.*

## IBIX AIR-NO-DUST

**IBIX AIR-NO-DUST** is the ideal solution to always have clean air in the work area.

In fact, some construction site operations generate dust, which is often harmful to those who work, making the surrounding area unusable. **IBIX AIR-NO-DUST** is a special line of extractors, capable of sucking contaminated air for very long cycles, breaking down the polluting load and returning healthy air. Used outdoors, **IBIX AIR-NO-DUST** is a powerful vacuum cleaner that prevents the propagation of dust, the professional filters with which it is equipped make it effective against even small particles up to the order of  $\mu$ .

In confined spaces, **IBIX AIR-NO-DUST** reduces the dust inside and prevents any contamination of the surrounding environment.

### TECHNICAL DATA

Air expulsion side flexible hose connection  
Suction side flexible hose connection  
Length  
Width  
Height  
Weight (including filter)

#### AIR NO DUST 2000

300 mm x 10 m  
300 mm x 10 m  
745 mm  
410 mm  
790 mm  
45 kg - 68 kg

#### AIR NO DUST 3000

450 mm x 10 m  
450 mm x 10 m  
845 mm  
718 mm  
790 mm  
66 kg - 94 kg

### AIR NO DUST 2000

- Integrated suction flange - pipe connection dm. 300mm Length 10m
- Integrated extraction flange - pipe connection dm. 300mm Length 10m
- Used in confined spaces: ideal up to rooms of 33 m<sup>2</sup>

Airflow without filters and hoses  
+ filter H13/H14  
+ intermediate filter (EU4) - bag filter  
Electrical connection  
Power consumption  
Engine power  
Electric cable type  
Protection class  
Type of protection  
Filtration system  
HEPA filter

110 V	230 V
2700 m <sup>3</sup> /h	3000 m <sup>3</sup> /h
2500 m <sup>3</sup> /h	2500 m <sup>3</sup> /h
2250 m <sup>3</sup> /h - 1950 m <sup>3</sup> /h	2300 m <sup>3</sup> /h - 2000 m <sup>3</sup> /h
100 - 120 V	230 V
4,6 A	2,6 A
0,375 KW	0,385 KW
HO7RN-F 3G1,5	
I	
IP 54	
three-stage	
according to EN 1822 class H13/H14	



### AIR NO DUST 3000

- Integrated suction flange - pipe connection dm. 450mm Length 10m
- Integrated extraction flange - pipe connection dm. 450mm Length 10m
- Used in confined spaces: ideal up to rooms of 61 m<sup>2</sup>

Airflow without filters and hoses  
+ filter H13/H14  
+ intermediate filter (EU4) - bag filter  
Electrical connection  
Power consumption  
Engine power  
Electric cable type  
Protection class  
Type of protection  
Filtration system  
HEPA filter

110 V	230 V
5000 m <sup>3</sup> /h	6000 m <sup>3</sup> /h
4500 m <sup>3</sup> /h	4600 m <sup>3</sup> /h
4000 m <sup>3</sup> /h - 3400 m <sup>3</sup> /h	4200 m <sup>3</sup> /h - 3600 m <sup>3</sup> /h
100 - 120 V	230 V
2 x 4,6 A	5,5 A
2 x 0,375 KW	0,75W KW
HO7RN-F 3G1,5	
I	
IP 54	
three-stage	
according to EN 1822 class H13/H14	



**Also available in version 4.0!**

### FILTERS AND ACCESSORIES

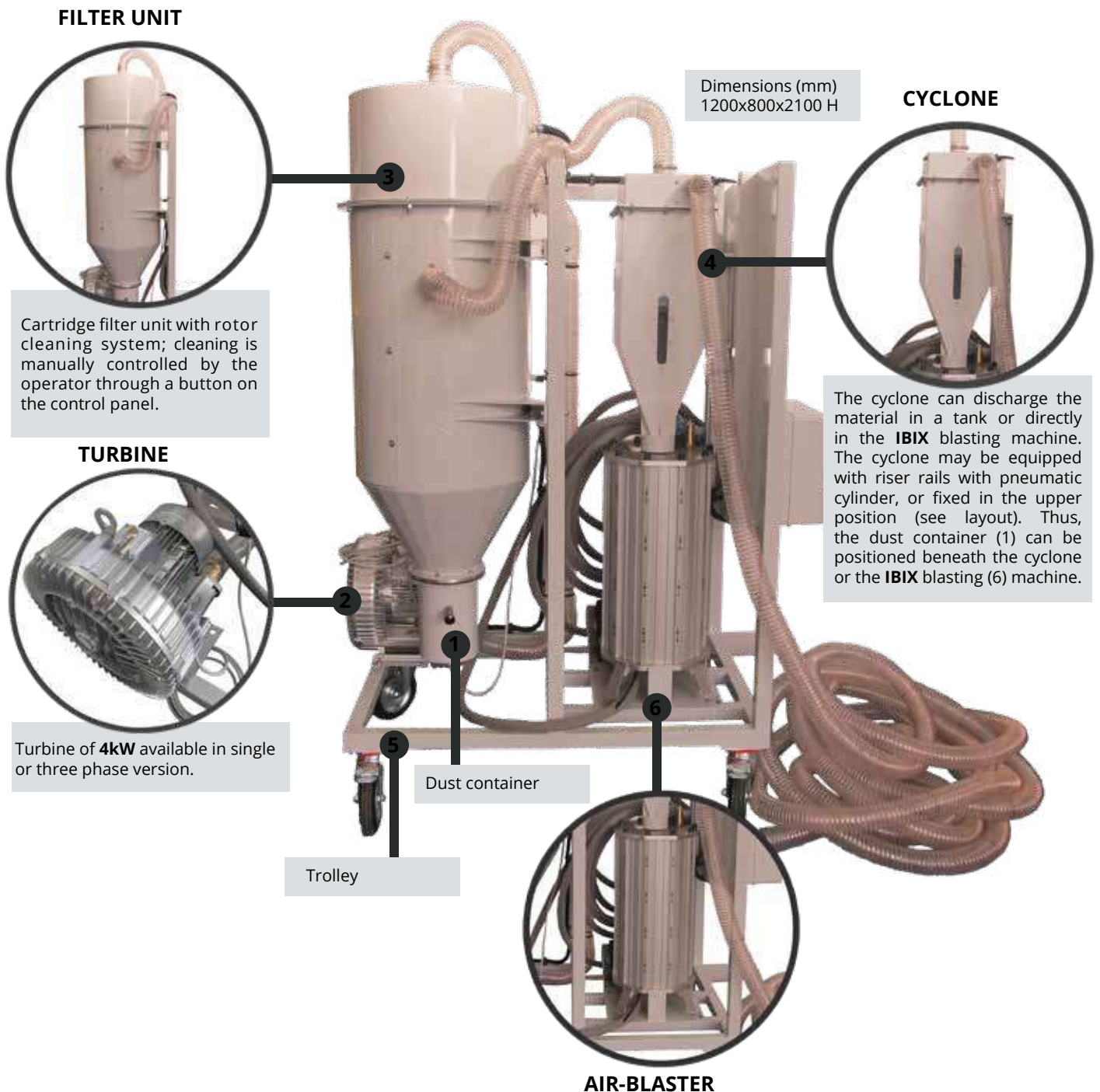


## ACCESSORIES

### IBIX R1 BLASTING MEDIA RECOVERY UNIT

The media recovery unit consists of a specific structure containing a specifically designed cyclone dust separator for the recovery and recycling of media normally used with **IBIX** ecological blasting systems. The cyclone is equipped with a special detachable filter that allows for retention of residues and foreign objects of sizes large enough to create blocks in the eco-blasting machine. **IBIX R1** is a machinery designed to guarantee optimal management of inert materials. By material recovery and filtering, **IBIX R1** allows containing the abrasive consumption related costs.

The system can use the material for many cycles of blasting, minimizing the incidence of the media cost on the work. **IBIX R1** is environmentally friendly, the media used is non-toxic and contains no free silica, and the recovery of abrasive limits the costs of disposal with significant advantages for environmental sustainability. The number of times the media can be reused varies depending on the application and working conditions; when the abrasive loses its effectiveness, it has to be replaced. On average, the system allows recovery of the inert materials that varies from 50 to 70%.



## ACCESSORIES

### BLASTING CABINETS

EU directives and international standards that were recently introduced not only in Europe but worldwide, strongly restricted the use of unhealthy and dangerous chemicals that are normally used for paint stripping, surface preparation, cleaning and decontaminating prior to painting or in the industrial maintenance field. Among the main substances classified as "CMR" (Carcinogenic, Mutagenic and Reprotoxic) is dichloromethane, which is used in the production of paint strippers (Decision No. 455/2009/EC of the European Parliament and of the Council of 6 December 2011).

The **IBIX** media cleaning and abrasive blasting methods are the most effective, cheap, user-friendly, green and healthy systems available on the market for surface preparation and cleaning. For indoor applications, **IBIX** offers a wide range of standard and customized pressure blasting cabinets that can be manually-operated or fully automatic plc-controlled. They can be used with any kind of media including soft media like baking soda, calcium carbonate or vegetal media in addition to the conventional media that are used in conventional blasting cabinets. The **IBS** Blasting Cabinets were chosen by leading industries in Europe in the car industry, railways, energy, food industry, printing industry.

- **One machine, two working tools:** **IBS** is the innovative pressure blasting cabinet combined with an **IBIX** portable blaster. The cabinet is used to carry out cleaning, sandblasting, or shot peening operations in factories or laboratories, but the **IBIX** machine can be easily disconnected and used separately for work on large items or those that cannot be moved.

- **Versatile:** it can be used inside workshops or for blasting outdoors when it is necessary to treat work pieces larger than the cabinet work area or at a client's premises with work pieces that cannot be removed or are hard to handle.

- **Environmentally friendly:** 100% sealed enclosures do not create pollution or health hazards.

- **Powerful and efficient:** the **IBIX** pressure cabinets are recommended where high performance and productivity are required.

- **Ease of operation – total visibility:** Dust and waste resulting from cleaning are sucked by a high power 4kW vacuum pump which guarantees ease of operation and total visibility.

- **Low operating costs:** the selective recovery of blasting media markedly cuts down costs and material consumption.

- **Recommended blasting materials:** Use blasting materials recommended by **IBIX** only, and follow the guidelines on material reuse to ensure proper functioning of **IBS** equipment. Media re-use depends on media grain size, hardness and media contamination after blasting.

- **Top quality highly professional electric cabinet with control panel** in compliance with the strictest applicable EU Directives. The electric cabinet incorporates a user-friendly control panel that is used to control all cabinet main functions. The electric cabinet includes a special timer that sets the cleaning time and intervals of the automatic filter cleaning systems that are fitted in the dust filtering cabinet according to the type of blasting media used and the type of job.

### SPECIAL IBIX CYCLONE SYSTEM

This cyclone system enables to reclaim the media and refill the **IBIX** unit when the **IBIX** media tank is empty. The cyclone up/down movements and the refill system are totally pneumatically operated and remote controlled by the operator. A sieve-type filtering device retains large residues and prevent them from falling into the **IBIX** tank.

The unit is placed inside a special metal supporting platform where the machine perfectly fits to ensure perfect alignment with the **IBIX** refill system.



# ACCESSORIES

## BLASTING CABINETS

### DUST FILTERING CABINET

The **IBS** Cabinets are fitted with an extra large dust filtering cabinet with two wide filtering surface area polyester filters with two remote-controlled timed automatic filter cleaning systems. Filter cleaning time and intervals can be set by the operator according to the blasting media grain size, hardness and type of contamination.



### ROTATING WORKTABLE AND CARRIAGE

A special rotating worktable with high quality dustproof bearings and a sturdy carriage can be supplied as optional equipment. This kit makes loading operations very easy and safe, it is recommended when heavy and bulky objects are to be handled and loaded into the cabinet.



Very powerful 4 kW Electric Air Blower ensures extremely high dust extraction capacity mainly when fine or ultra fine media such as almond garnet, calcium carbonate or sodium bicarbonate are used.

### DUST EXTRACTION



### ANTISTATIC SUCTION HOSES



Special antistatic suction hoses are supplied to ensure protection against magnetic fields that are generated when aluminium oxide is used as blasting media.

Technical characteristics	IBS 100-350	IBS 150-350
Load capacity	350 kg	350 kg
Working dimensions (LxDxH)	900x800x700 mm	1400x800x700 mm
Suction pump m3/H	310 m3/H	550 m3/H
Pump power	4 kW	5.5 kW
Operating pressure (bar)	0.5 – 7.5 bar	0.5 – 7.5 bar
Cabin Overall Dimensions with <b>IBIX</b> System installed (LxDxH)	2100x2000x1700 mm	2600x2000x1700 mm
Empty weight	350 kg	400 kg

ABRASIVE	APPLICATIONS
<b>IBIX Art</b>	Foundry applications, extrusion, moulding and forging of metal, plastic, glass, precision matrix dies and other dies. Pickling, engraving, trimming, removal of oxidised spots or creation of surface roughness, glass etching, paint removal. Do not use this material on precision mechanical parts (dimensions might be altered).
<b>Glass beads</b>	Metal cleaning, regeneration, satin finishing Shot-peening or finishing of welds (on stainless steel, aluminium etc.).
<b>Vegetal media</b>	Ecological cleaning and pickling without altering the part to treat, delicate part treatment.
<b>Sodium bicarbonate</b>	Precision cleaning and decontamination.

## MEDIA

The **IBIX** business philosophy is dedicated to promoting respect for the environment and the conservation of our historical, cultural and architectural heritage. The **IBIX** System is a totally sustainable technology designed to have extremely low environmental impact that minimizes waste production and uses only non-toxic, neutral media that can be reclaimed and re-used. The **IBIX** Units allow for wide variety of choices and can use media of different chemical composition and hardness (IBIXArt Garnet, Calcium Carbonate, Carbon Art, Vegetal granules such as walnut shells, Sodium Bicarbonate, Glass Beads ...), and of different grain size (from 38µm to 1800µm).

Choosing the right Media allows the Operator to make the correct choice for any surface preparation and cleaning application. IBIX media are completely non-toxic and environmentally friendly and are an ecological choice.



### IBIX ART

**IBIX Art**, Natural Abrasive Material **IBIX Art** consists of almandine garnet grains, one of the hardest, most durable natural minerals known to man. Eco-friendly, thanks to its non-toxicity, **IBIX Art** is compliant with environmental protection and safety at work standards. It makes working environments safer, healthier, cleaner and reduces noise levels because of the lower pressure.

**IBIX Art** is Safe and Chemically Inert. It does not contain ferrite and therefore does not oxidize which means it can be used to blast Stainless Steel, Antimagnetic Steel, Aluminium, etc. It does not break on impact and contains no free silica therefore it is safe for operators. **IBIX Art** cuts disposal costs, thanks to low consumption and reusable media.

Thanks to the high stripping speed of this abrasive (high number of grains per unit of volume), its blasting speed in sqm/h (ft/h) is higher. Our **IBIX** units can strip up to 5 to 10 sqm/h (150-350 ft/h). Thanks to its low friability, **IBIX Art** can be reused 3 to 5 times (according to application types) without losing any of its outstanding stripping power.

IBIX ART EXTRA-STRONG  
(12/24 mesh)



IBIX ART STRONG  
(20/40 mesh)



IBIX ART SPEED BLAST  
(30/60 mesh)



IBIX ART MEDIUM  
(80 mesh)



IBIX ART FINE  
(120 mesh)



IBIX ART EXTRA FINE  
(200 mesh)



IBIX ART SUPER FINE  
(350 mesh)



### SODIUM BICARBONATE

Totally water soluble, sodium bicarbonate is used to clean substrate made of composites, scratch-prone materials, glass, polished, marbles and granites, ceramics, stainless steel, aluminium with no risk of abrasion. It is very effective, ecological and leaves the surface, even polished surfaces, unaltered. It does not leave dirt or any particles on the surface. After cleaning, what is left does not require special treatment.



## ■ CALCIUM CARBONATE

**CarbonArt** is Special formulated Calcium Carbonate that the **IBIX** technical team has selected in collaboration with experts in monument restoration.

After laboratory and worksite testing, **CarbonArt** has proved to be one of the most effective and less invasive materials for cleaning stone, brick and marble of historical and modern architectural works. **CarbonArt** contains calcium carbonate in two grain sizes that **IBIX** has selected specifically for cleaning works of art.

Very fine, homogeneous grain size and rounded morphology, as well as the purity of the extremely white material are features certified by analyzing every production batch.

## ■ VEGETAL MEDIA

Ideal for eco-friendly cleaning and pickling without altering surfaces.

With the vegetal media, material selectivity can be exploited to the fullest, e.g., window frames can be treated without removing the glass.

The vegetal material acts on which, which is similar to it, but does not affect the hardness of the glass.

## ■ REBLAST - CRUSHED GLASS

*Suitable for the treatment of steel, stainless steel and aluminium*

ReBlast is an iron-free abrasive suitable for use on steel, stainless steel and aluminium. ReBlast has an angular shape which makes it an efficient abrasive for cleaning jobs.

ReBlast is a highly clean product. Contains a minimal amount of salt. In contrast to carbon slag abrasives, glass has a low heavy metal content, which is especially important when working in areas where it may be difficult to collect the abrasive after use. Quartz sand is used in the production of glass, but during the melting process the crystalline quartz is transformed into amorphous quartz.

Switching from using quartz sand to using crushed glass improves the working environment as ReBlast does not include the notoriously harmful respirable quartz.

Typical dimensions: 0,08-0,25 mm\* | 0,25-0,8 mm\* | 0,8-1,5 mm\* | 1,5-2,4 mm\*.

(\* ) Can be mixed according to needs; ex.: 0,25-1,5 mm; 0,25-2,4 mm; 0,8-2,4 mm

## ■ GLASS BEADS

The glass beads are highly resistant to wear and impact.

They are used in the shot blasting machines for cleaning the surface of the items to be treated, which need to be cleaned without altering them.

Glass beads are chemically inert and do not contain lead or sulfur in its free state.

They also protect against silicosis because they do not contain free silica (SiO<sub>2</sub> is chemically bound in the glass).

They are used in various industries: glassworks, mechanical, grinding, foundries, aviation, goldsmiths, dental, electroplating, chromium plating, mould cleaning, etc.

## ■ SANGRIT

Ferrous grit from the melting of non-ferrous metals and subsequent granulation in water as per UNI EN ISO 11126-1:2019

### Features

Slag with a predominantly amorphous, glassy structure and high resistance to crushing and abrasion, making it particularly suitable for blasting metal surfaces.

CARBONART Z5



CARBONART Z6



WALNUT SHELLS



CORN COB



REBLAST



GLASS BEADS



SANGRIT





# APPLICATIONS

## RESTORATION - BUILDING

### MICRO-PRECISION CLEANING



### TREATMENT OF STONE MATERIALS



### CLEANING OF METAL PARTS



**WOODEN ARTIFACTS RESTORATION**



**CLEANING OF REINFORCEMENT RODS**



**GRAFFITI REMOVAL**



**INDUSTRIAL NON-ABRASIVE CLEANING WITH SODIUM BICARBONATE, SODA BLASTING**



**PRE-PAINTING METAL PREPARATION**



**BODYWORK, CAR/MOTORBIKE RESTORATION**



## SHIPYARDS



## BOAT MAINTENANCE



## RAILWAY MAINTENANCE





Imperial Forum of Trajan, Rome

# Our operations



Trevi Fountain, Rome



Fondi Cal, Aquileia (UD)





Ca' Brutta, Milan



Corso Cinema, Turin



Fountain of Neptune, Naples



Eiffel Tower, Paris, France



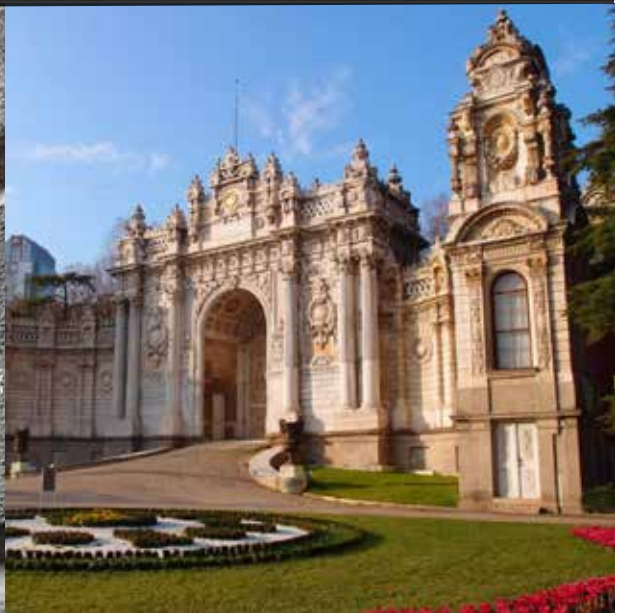
Cadet Chapel, West Point, USA



Seat of Daughters of the America Revolution, Capitol Hill, Washington, USA



Fortified walls, Malta



Dolmabahçe Palace, Istanbul, Turkey



Fontana di Trevi e Barcaccia, Roma, Italy





**IBIX SRL**

Via dell'Industria 43, Lugo (RA)  
tel. +39 0545 994589 - Fax +39 0545 994567  
info@ibix.it - ibix.it  
info@ibixindustrial.com - ibixindustrial.com  
info@ibixbiocare.it - ibixbiocare.it